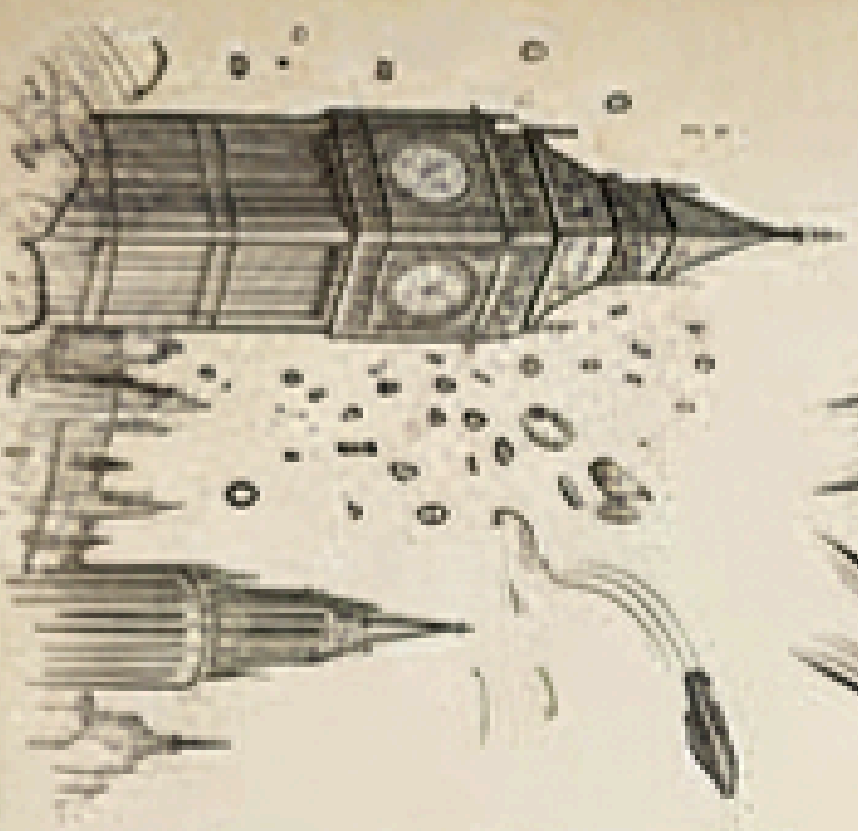
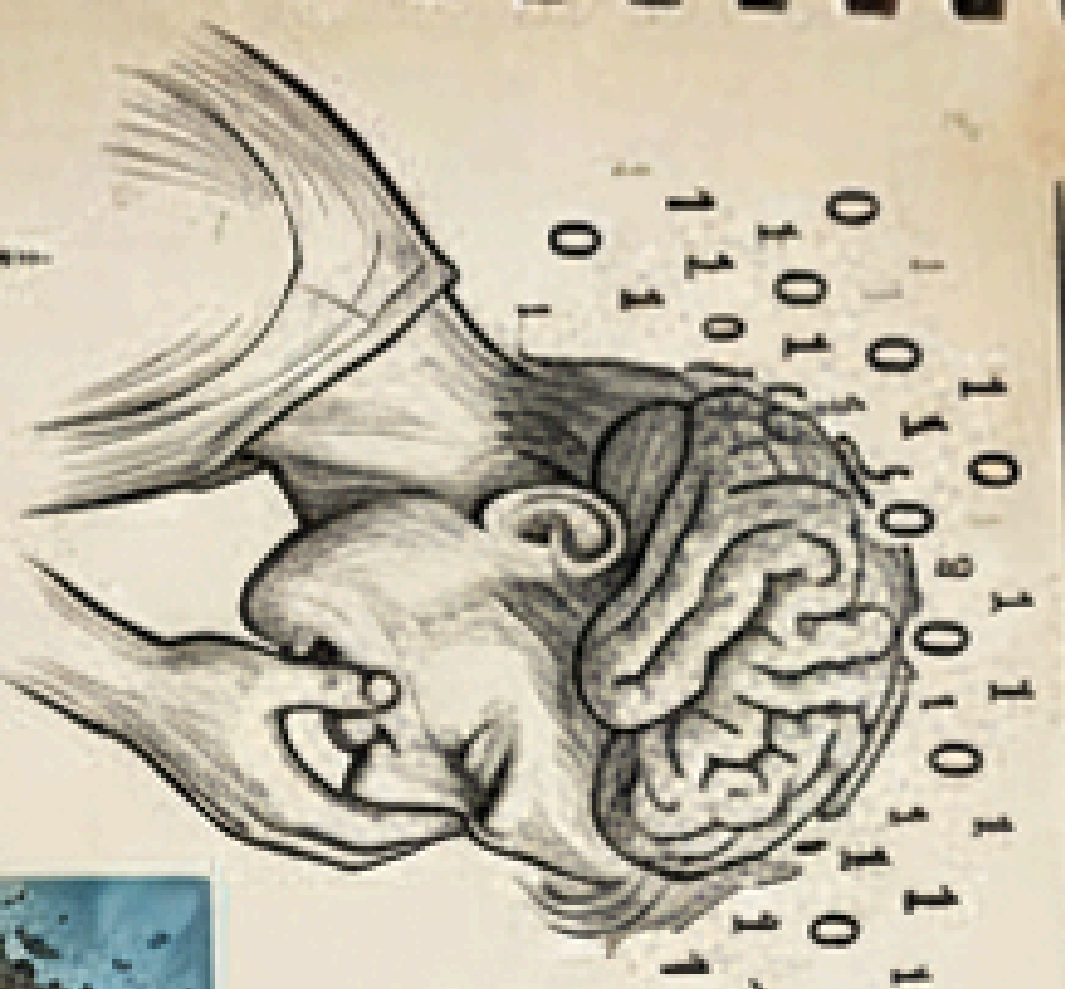


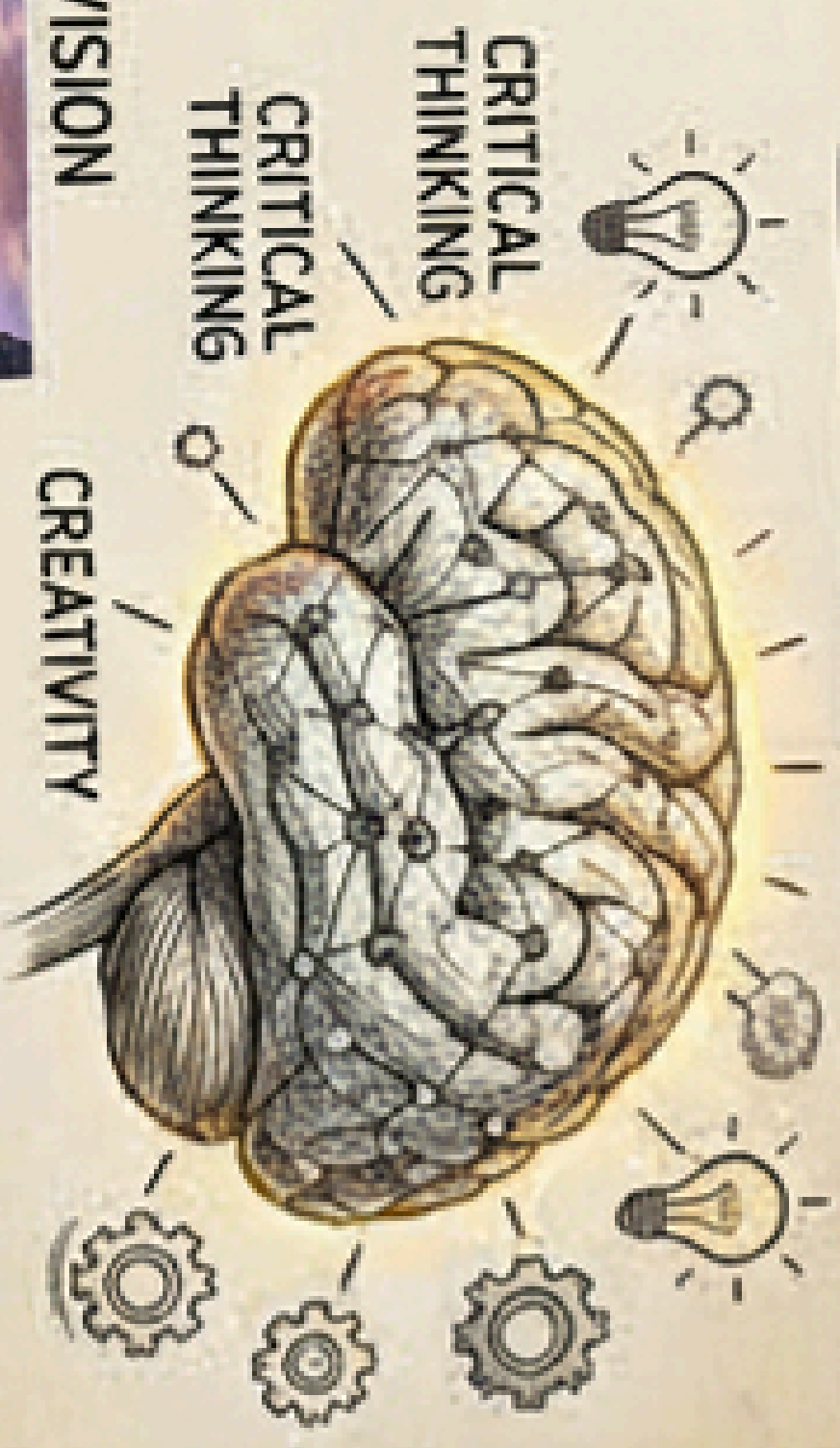
PHASE 1: THE PROBLEM (Erosion)



CREATIVITY ATROPHY



PHASE 2: THE SOLUTION (Rebirth)



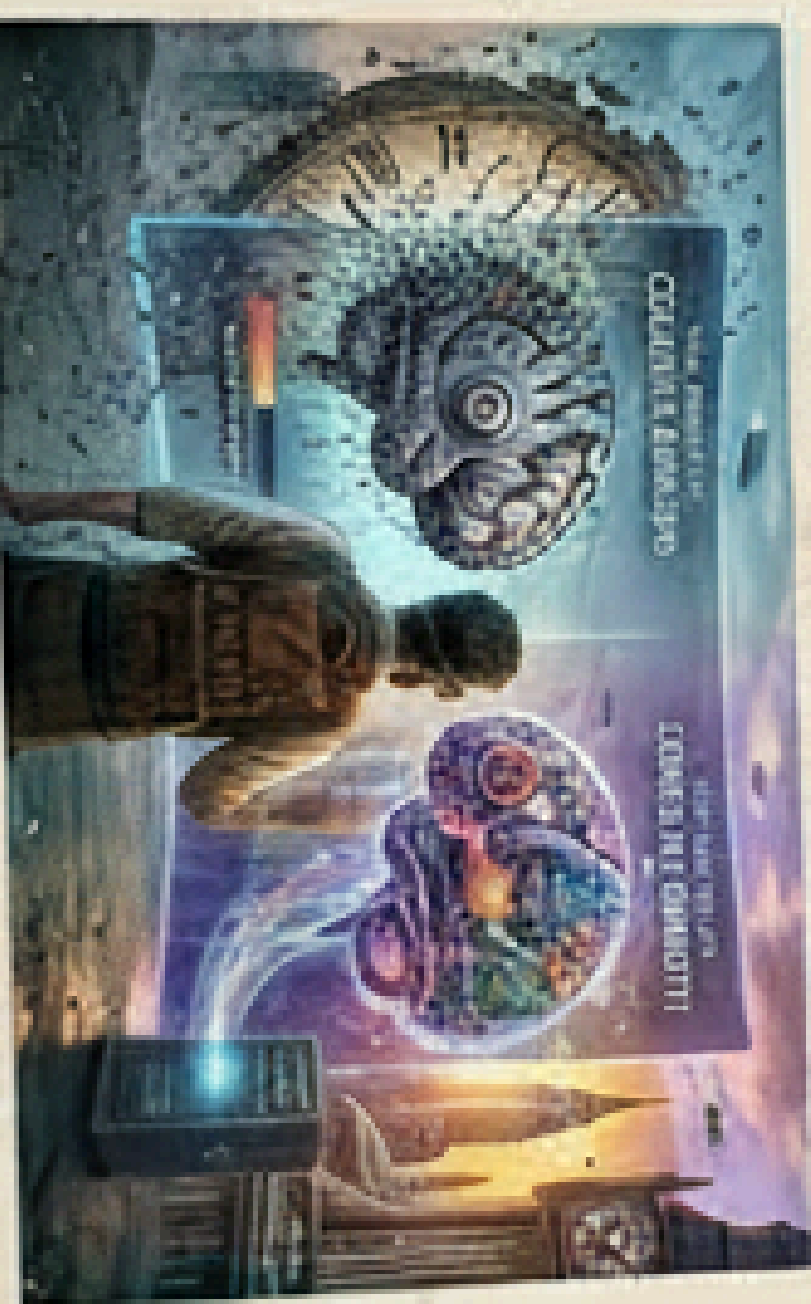
CRITICAL THINKING

CRITICAL THINKING

CREATIVITY



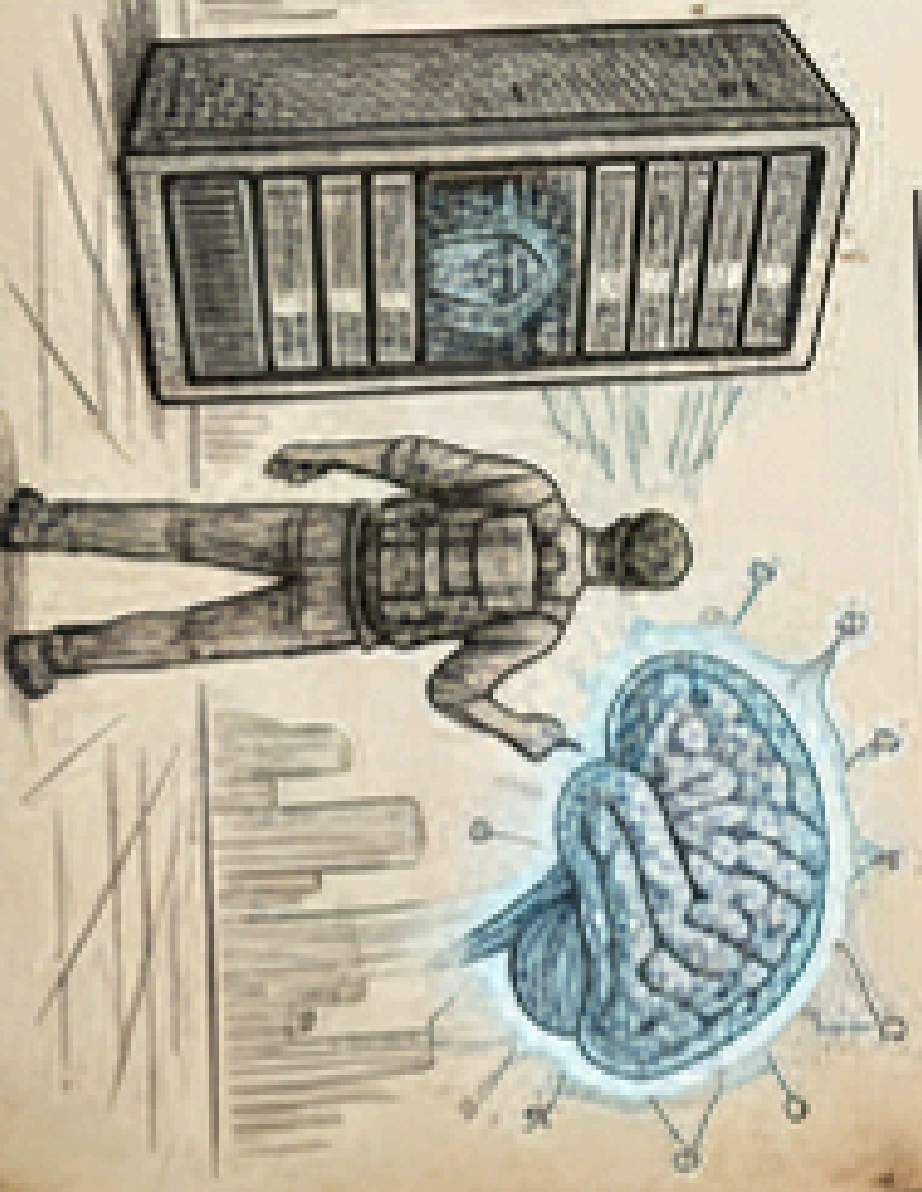
PHASE 4: FINAL VISION



PHASE 4: FINAL VISION

THE CREATIVE PATHWAY:
From dependency to agency.

PHASE 3: THE DUALITY



PHASE 3: THE DUALITY

PROJECT AETHERREAL COGNITION: CONCEPT -> CREATION